

NO.	DATE	BY	DESCRIPTION	APPD	NO.

ELLINGTON AIRPORT
Houston, Texas

EXISTING
AIRPORT LAYOUT PLAN



APPROVED BY: *[Signature]*
CITY OF HOUSTON
 DEPARTMENT OF AVIATION
 DIRECTOR OF AVIATION

DATE: 2/14/16

APPROVED BY: *[Signature]*
FEDERAL AVIATION ADMINISTRATION
 AIRPORTS DIVISION

DATE: 2/14/16

APPROVED BY: *[Signature]*
RICONDO & ASSOCIATES

PREPARED BY: *[Signature]*
 Ricondo & Associates, Inc.

CHECKED BY: EMG

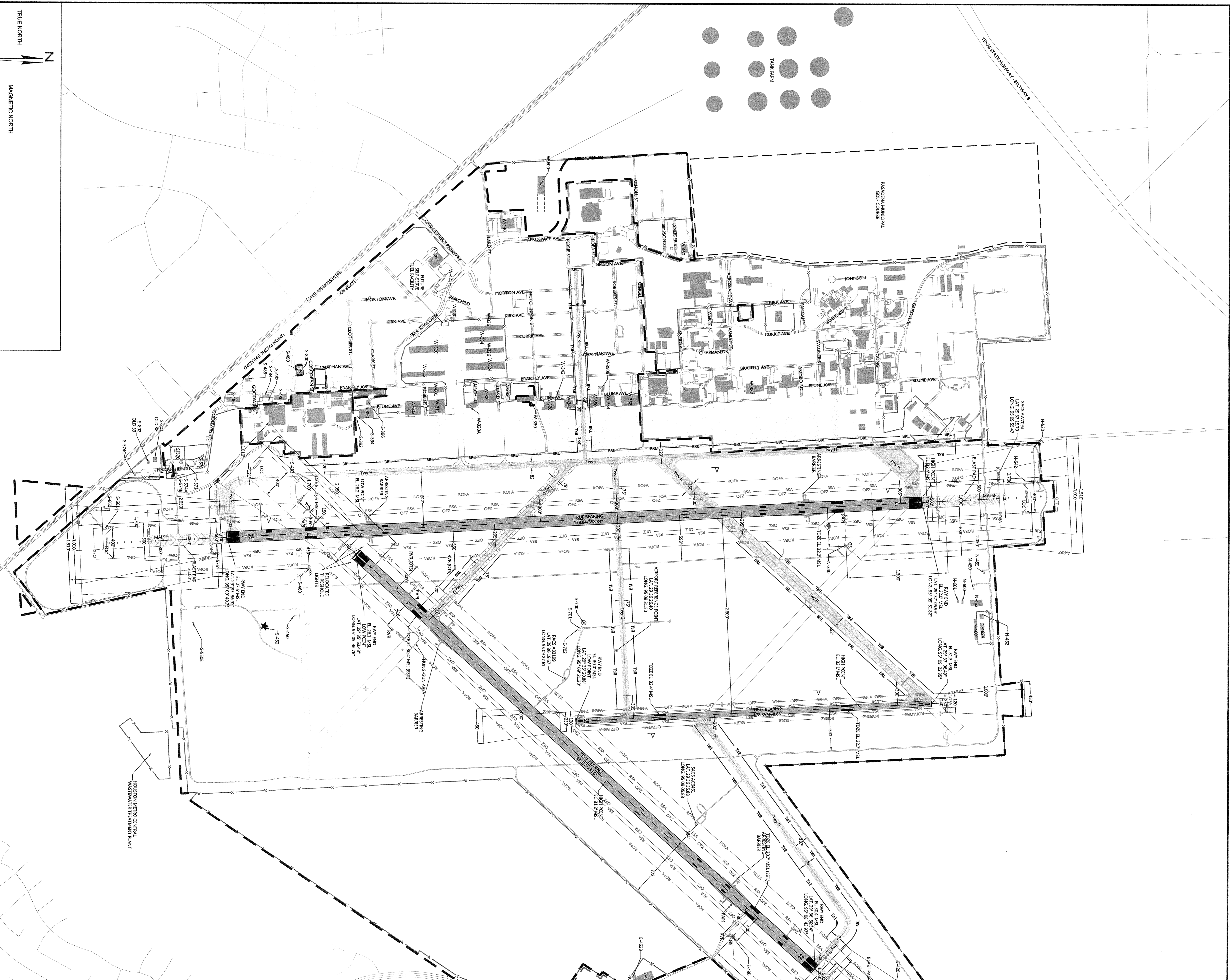
DRAWN BY: AFB

DATE: February 2016

Sheet 2 of 21

AIRPORT BUILDING DATA TABLE

NEW NO.	OLD NO.	DESCRIPTION	ROOF ELEV.	NEW NO.	OLD NO.	DESCRIPTION	ROOF ELEV.
E-420	NONE	MAJLS SHELTER	36.1'	S-574A	37	ANG FUEL PUMP STATION	37.1'
E-430	NONE	GLIDE SLOPE ANTENNA & TRANSMITTER	36.1'	S-574B	NONE	ANG FUEL MAINTENANCE SHOP	35.2'
E-432	NONE	MAJLS TRAINING FACILITY	43.8'	S-574C	40	ANG FUEL MAINTENANCE SHOP	40.1'
E-452B	NONE	MAJLS NEUTRAL BIOVACUUM LAB	70.6'	S-660	41	EMERGENCY GENERATOR (ABANDONED)	27.0'
E-620	NONE	MIDDLE MARKER SHELTER (ABANDONED)	33.3'	S-661	42	LOCALIZER SHELTER	33.2'
E-700	NONE	DECOMMISSIONED TOR	42.2'	S-790	34	EMERGENCY GENERATOR (ABANDONED)	23.3'
E-701	NONE	TRACK/DOME SHELTER	38.4'	S-800	NONE	FUEL TANKS (ADJACENT TO S-490)	47.5'
E-702	NONE	TRACK/DOME ANTENNA	31.8'	S-801	38	ANG FUEL TANKS (2 HORIZONTAL)	34.9'
N-340	NONE	GLIDE SLOPE ANTENNA & SHELTER	38.0'	S-802	39	ANG FUEL STORAGE	36.9'
N-450	2	EMERGENCY GENERATOR	43.4'	W-310	21	T-HANGAR A	50.8'
N-452	NONE	AIRPORT MAINTENANCE WAREHOUSE	59.1'	W-311	NONE	FBO HANGAR	62.2'
N-455	NONE	AIRPORT MAINTENANCE WAREHOUSE	44.1'	W-312	22	FBO TERMINAL/FLYING TIGERS SCHOOL	61.0'
N-462	3	AIRPORT MAINTENANCE FUEL STATION	56.0'	W-324	14	T-HANGAR C	58.3'
N-463A	4	AIRPORT MAINTENANCE COVERED PARKING	57.6'	W-328	15	T-HANGAR D	49.2'
N-530	1	EMERGENCY GENERATOR	42.9'	W-330	9	OLD ARRF STATION (VACANT)	59.2'
N-542	NONE	LOCALIZER SHELTER	41.5'	W-332	10	AV FLIGHT SIMULATION	49.6'
N-600	NONE	HAS STORAGE	51.3'	W-334	16	T-HANGAR E	50.0'
N-601	NONE	FBO MAINTENANCE STORAGE	35.7'	W-336	17	T-HANGAR F	50.0'
S-392	25	FBO MAINTENANCE STORAGE	35.7'	W-340	7	BOJASADA FLIGHT OPERATIONS HANGAR	58.6'
S-394	24	INTEGRATED AIRLINE SERVICES INC.	48.6'	W-342	8	AIR TRAFFIC CONTROL TOWER	80.4'
S-396	NONE	RING EMERGENCY GENERATOR	33.6'	W-350	NONE	TEXAS STRUNG LEGENDS	67.8'
S-432	30	EMERGENCY GENERATOR/RUNWAY BEACON	39.6'	W-359B	6	ELECTRICAL VAULT	42.2'
S-460	43	GLIDE SLOPE ANTENNA & SHELTER	32.3'	W-359C	6	FBO HANGAR	70.6'
S-482	28	WAREHOUSE (VACANT)	50.6'	W-354	NONE	ANG ARRF FACILITY	58.6'
S-482	26	JOHNSON CONTROLS RESTROOM	35.6'	W-382	NONE	ANG ARRF FACILITY	53.0'
S-483	NONE	LOCALIZER SHELTER	48.9'	W-420	20	GRUWAMANN SECURITY GUARD POST	46.2'
S-484	27	AUTOMOTIVE SHOP (VACANT)	48.9'	W-421	NONE	GRUWAMANN SECURITY GUARD POST	46.2'
S-488	33	WINGS OVER HOUSTON WAREHOUSE	41.0'	W-440	18	HAS ADMINISTRATIVE FACILITY	92.8'
S-488	32	WAREHOUSE (TECHNICAL WORKSHOP)	39.6'	W-600	NONE	SATELLITE COMMUNICATIONS BASE	53.9'
S-530B	NONE	ABANDONED BUILDING	39.3'	W-601	NONE	FBO HANGAR	109.3'
S-570	35	FBO FUEL FACILITY	37.6'	W-602	NONE	FBO HANGAR	60.5'
S-571	NONE	FBO FUEL FACILITY	34.0'				73.5'
S-573	NONE	FBO FUEL FACILITY	35.1'				



TRUE NORTH

MAGNETIC NORTH

DECLINATION = 2° 24' 41" E

ANNUAL CHANGE = 7.8 W

(AUGUST 2014)

SCALE IN FEET

0 500 1000 1500 2000

LEGEND

- RUNWAY PAVEMENT
- TAXIWAY PAVEMENT
- APRON PAVEMENT
- BUILDING
- AIRCRAFT RESCUE & FIRE FIGHTING (ARFF)
- EXISTING AIRPORT PROPERTY LINE
- FENCE (Ø AGL)
- APPROACH RUNWAY PROTECTION ZONE
- DEPARTURE RUNWAY PROTECTION ZONE
- RUNWAY SAFETY AREA (RSA)
- RUNWAY OBSTACLE FREE ZONE (ORFZ)
- PRECISION RUNWAY OBSTACLE FREE ZONE (P-OFZ)
- RUNWAY OBJECT FREE AREA (ROFA)
- BUILDING RESTRICTION LINE (BRL)
- RAILROAD
- LOCALIZER CRITICAL AREA
- GLIDESLOPE CRITICAL AREA
- HOLD BAR
- ILS CRITICAL AREA HOLD BAR
- NASA PROPERTY
- MILITARY PROPERTY
- GOLF COURSE BOUNDARY
- WIND CONE
- ROTATING BEACON

Note:
 1. All elevations reference the North American Datum 1983 (NAVD 83).
 2. All elevations reference the North American Vertical Datum 1988 (NAVD 88).